

## Design Set 2 – Groovy Girl

### Materials

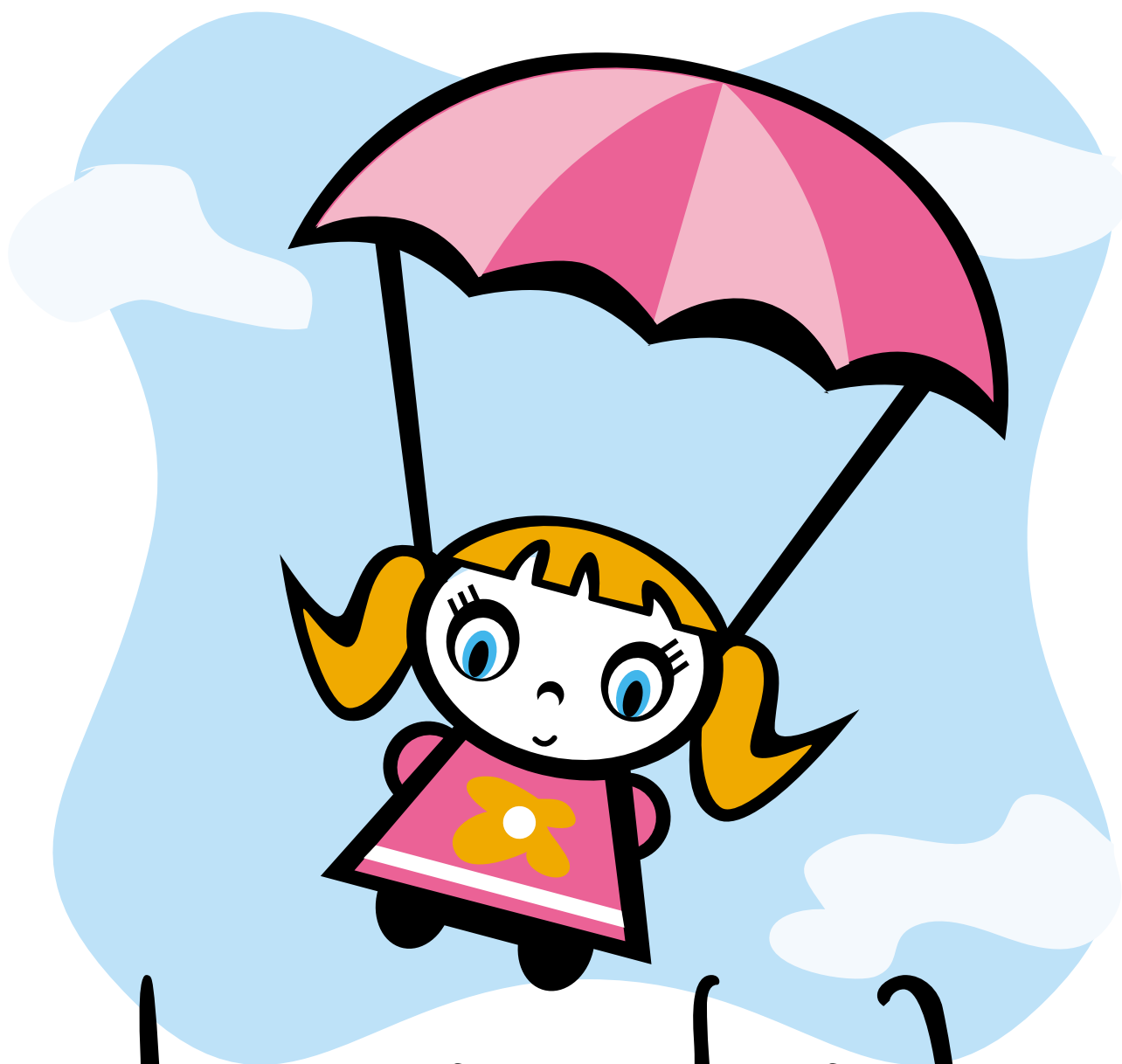
- Iron-on T-shirt transfer paper
- One T-shirt (100% cotton is preferable, though a 50/50 cotton-polyester blend will work)

### Instructions

Be sure to print the image onto the iron-on T-shirt transfer paper. Choose transfer paper that will work with your inkjet printer (we used HP Iron-on T-Shirt Transfers). Your image will print out in reverse. The art can be found on the following pages:

- Gironimo! – page 2
- Beach Boogie – page 3
- Paris – page 4





!omino!ri0



