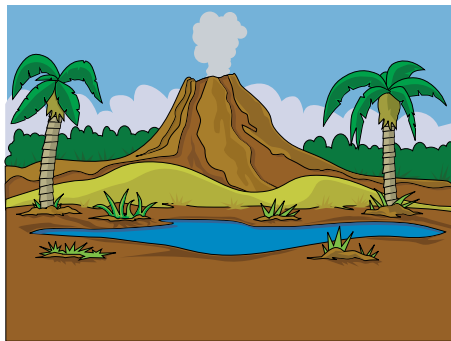


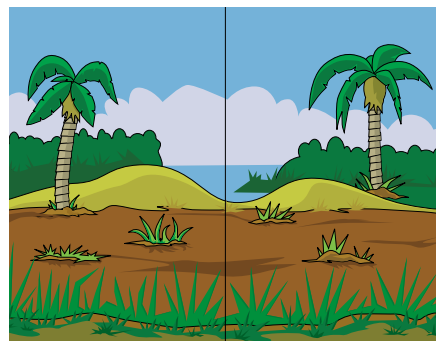


# Dinosaur Diorama Instructions

1. Start with a box approximately ten inches long and eight inches wide.
2. With the box standing on one of the long sides, measure the back to determine the size of the background scene.
3. Make the side scenes the same height and cut down the middle to make one for the left and one for the right side of the box.
4. Measure the floor of the box and cut out the ground piece to fit.
5. Cut out the dinosaurs and plants. Fold back the tabs and attach to the base using glue or double-sided tape.



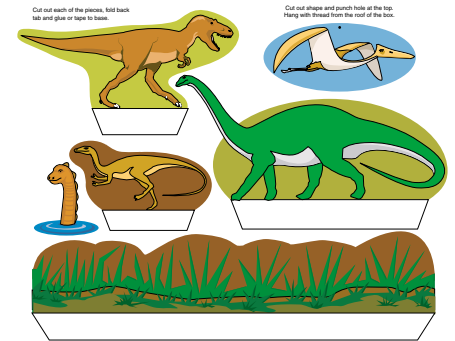
Background scene



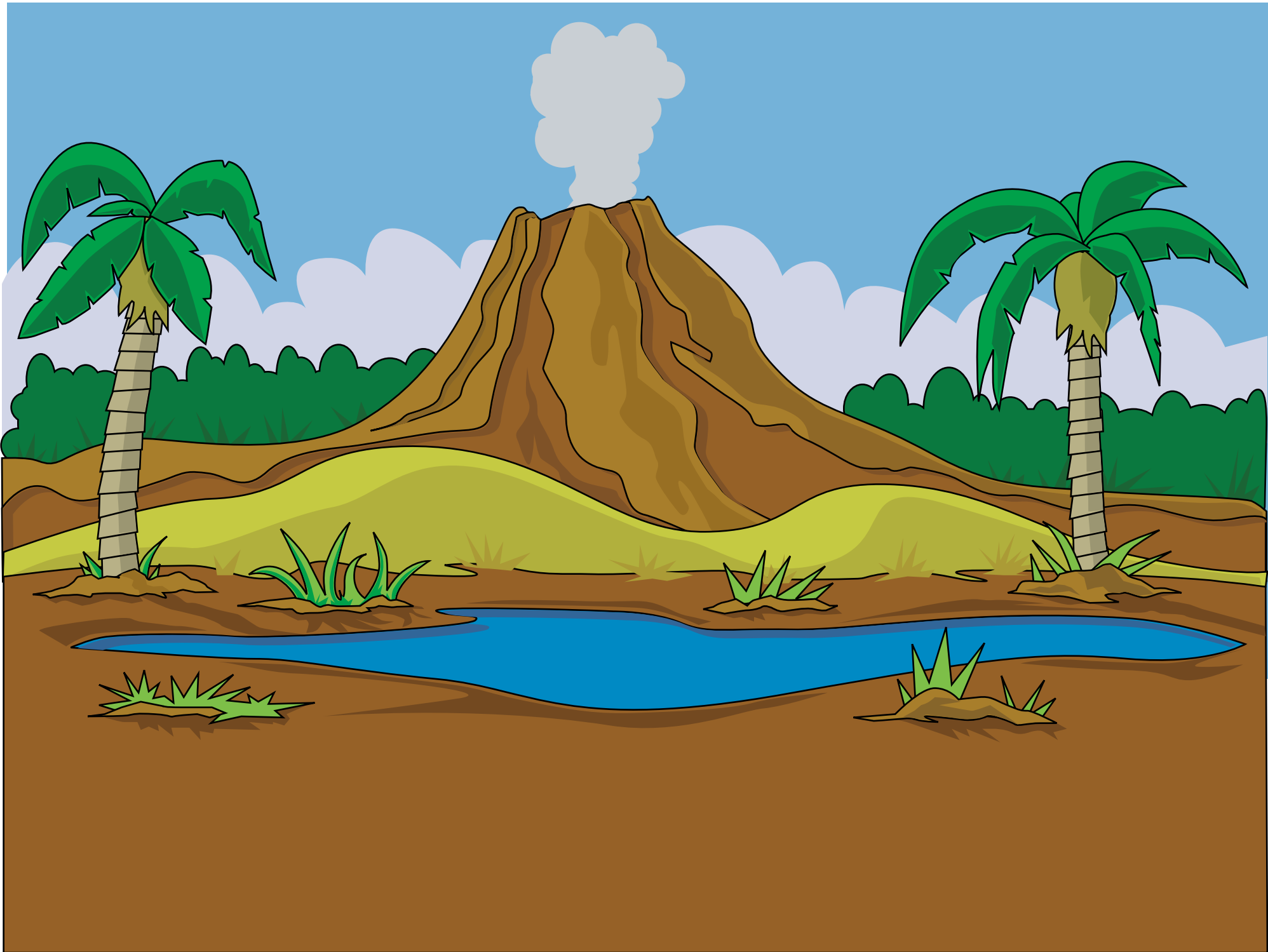
Side scenes

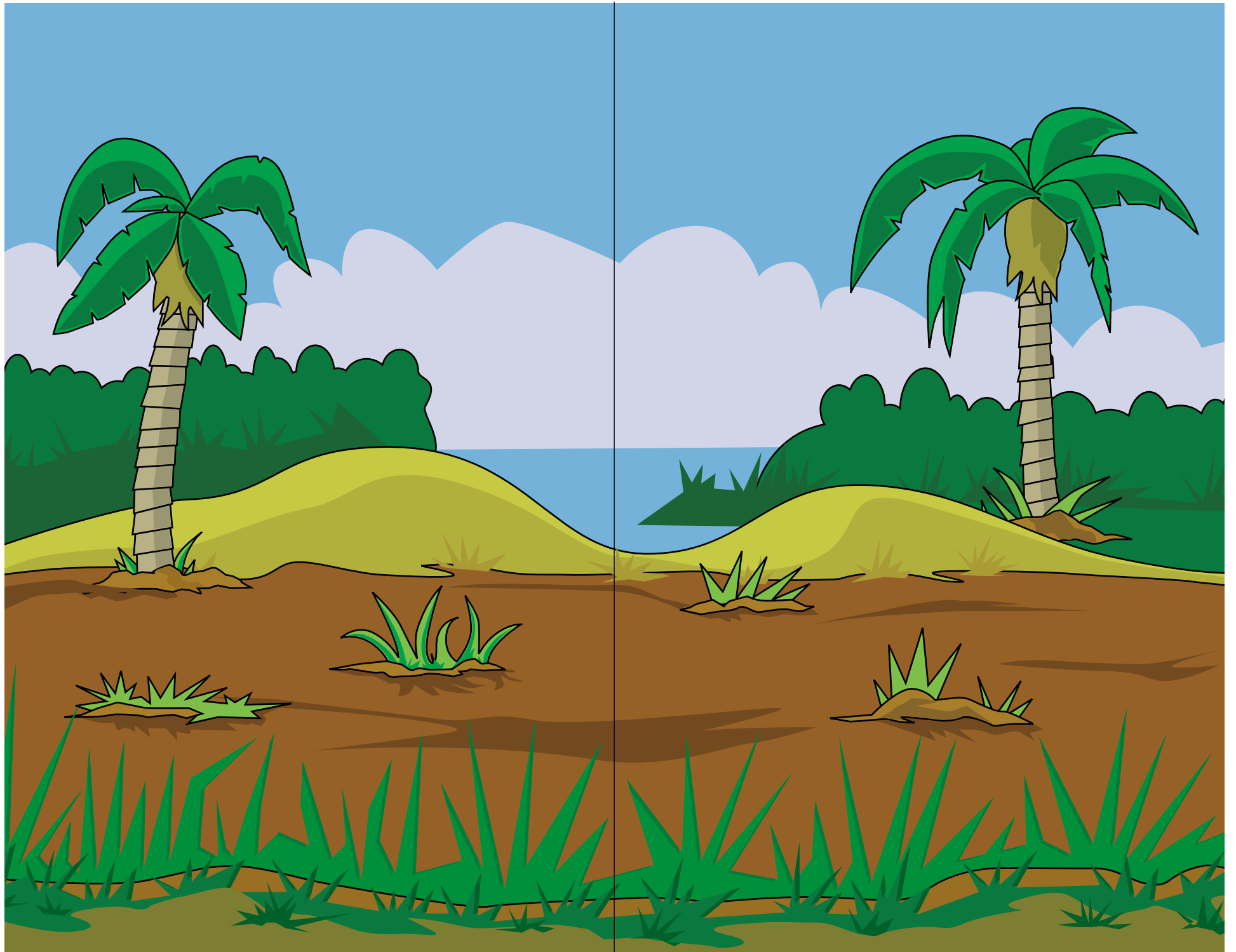


Ground



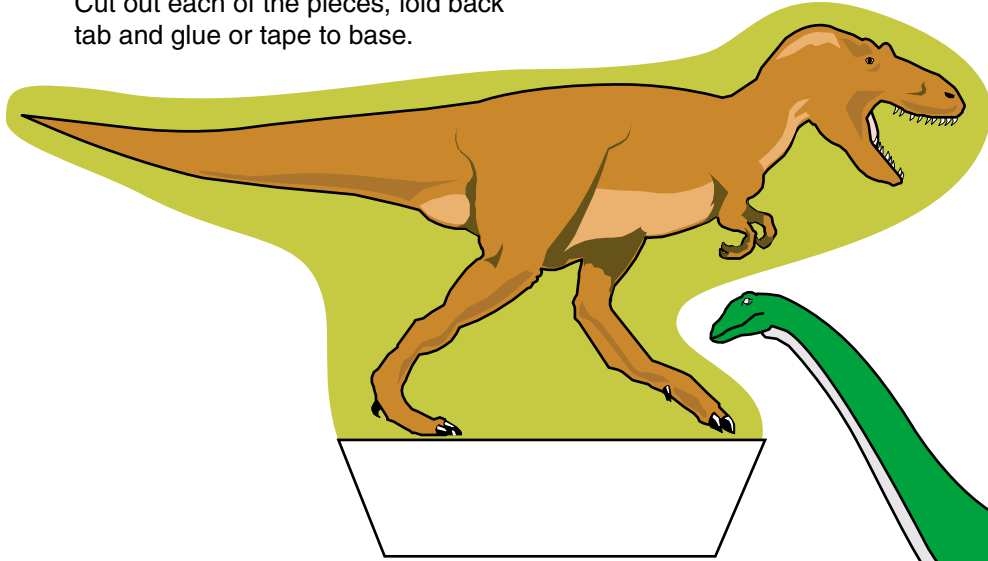
Pieces







Cut out each of the pieces, fold back tab and glue or tape to base.



Cut out shape and punch hole at the top. Hang with thread from the roof of the box.

